

# kaan saatman

## uniforms & garments

**INTERNATIONAL UNIFORM & APPAREL MANUFACTURER AND EXPORTER SINCE 1993**

We are a one stop shop apparel supply partner that empowers our clients to nimbly adapt to ever changing circumstances.

We lead the industry in product range, lead time and order size versatility, therefore, our partners receive their products they need when they need them without the burden of excess inventory.

*Manufactured in Izmir, Turkey. Exported to All Over the World.*



İZMİR CHAMBER OF COMMERCE



KCS TURİZM TEKSTİL OTOMOTİV AMBALAJ İTHALAT VE İHRACAT LIMITED SİRKETİ  
Kaan Saatman Uniforms, Garments & Fabrics  
Adalet Mah. Anadolu Cad. No: 41 081 Bayraklı/Izmir-Turkey  
E-mail: [info@saatmantextile.com](mailto:info@saatmantextile.com) Web: [www.saatmantextile.com](http://www.saatmantextile.com)

### **Who are we?**

Kaan Saatman Uniforms & Garments is a manufacturer and exporter company with a professional team following up sales, orders, manufacturing, shipments, and documentation based in Izmir, TURKEY with a contact office in Toronto, CANADA.

### **Why us?**

We are in the business over 20 years and in collaboration with best fabric manufacturers. We are supplying our fabrics from the best manufacturers in Turkey, this means a fast and quick delivery for our customers.

Located in the west coast of Turkey, therefore it is easy to reach all the countries. Izmir is close to Turkey's main ports and Izmir Adnan Menderes International Airport.

### **What do we do?**

We are always one click or one call away from you with world's best certificated fabrics and with the best workmanship. When we bring them under the same roof and serve to your door.

- CORPORATE UNIFORMS
- HOTEL UNIFORMS
- SPECIAL APRONS
- SCHOOL AND COLLAGE UNIFORMS
- RESTAURANT UNIFORMS
- WORK WEARS (FACTORY UNIFORMS)
- VISIBILITY UNIFORMS
- HEALTHCARE & HOSPITAL UNIFORMS
- SUITS

***YES, WE MANUFACTURE and YES, WE ARE DEALING WITH ANY OTHER ITEMS YOU NEED THAT WE DON'T MANUFACTURE.***

***THAT MAKES US A COMPLETE SUPPLIER FOR YOU.***

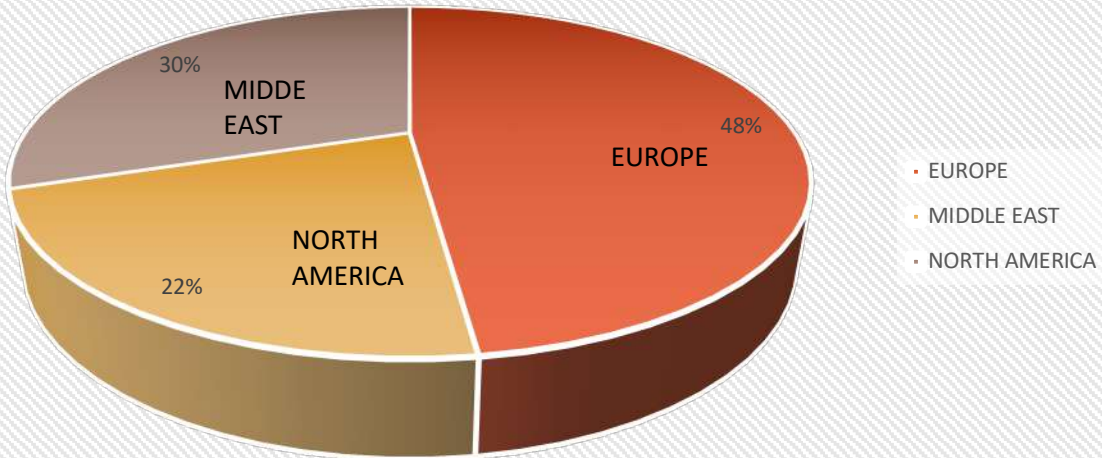
## OUR LOCATION

Our company is located literally in the middle of the world.  
Izmir, Turkey has many ports and an international airport which reduces shipping costs.

We are close to **Izmir Port, Istanbul Port, Mersin Port** and  
**Izmir Adnan Menderes International Airport.**



Which destination we are exporting our school uniforms?



This is one of the strong sides of SAATMAN TEXTILE.

We are exporting all over the world.

Our experienced customs and exporting team will choose the best carrier for you and follow up your orders until you receive them.

KCS TURIZM TEKSTIL OTOMOTIV AMBALAJ ITHALAT VE IHRACAT LIMITED SIRKETI  
Kaan Saatman Uniforms, Garments & Fabrics  
Adalet Mah. Anadolu Cad. No: 41 081 Bayrakli/Izmir-Turkey  
E-mail: [info@saatmantextile.com](mailto:info@saatmantextile.com) Web: [www.saatmantextile.com](http://www.saatmantextile.com)

## OUR PARTNERS

### TOURISM MANAGEMENT SCHOOLS AND COLLEGES



مدرسة الكويت الانجليزية  
KUWAIT ENGLISH SCHOOL

### HOTELS

**R**  
RENAISSANCE®  
HOTELS

**HILTON**  
WORLDWIDE

KCS TURIZM TEKSTİL OTOMOTİV AMBALAJ İTHALAT VE İHRACAT LIMITED SİRKETİ  
Kaan Saatman Uniforms, Garments & Fabrics  
Adalet Mah. Anadolu Cad. No: 41 081 Bayraklı/Izmir-Turkey  
E-mail: [info@saatmantextile.com](mailto:info@saatmantextile.com) Web: [www.saatmantextile.com](http://www.saatmantextile.com)

## HOSPITALS AND CLINICS



MEDICALPARK



## AUTOMOTIVE INDUSTRY



## SWITZERLAND RAILWAY COMPANIES



AUTOMATION AND PACKING INDUSTRY



FIBER OPTIC INDUSTRY



SPORTS CLUB



## OUR CERTIFICATIONS

We know the sensitivity of our partners and customers.

We are a quality freak that is why our fabrics holds the best certificates around the world.

You can contact us for technical data sheets of our fabrics.



**BRINGING YOUR NUANCED DESIGN VISION TO LIFE**



**OUR DESIGNERS WILL CREATE  
YOUR LABELS TO REFLECT YOUR  
COMPANY LOGO AND MOTTO  
ON YOUR UNIFORM AT THEIR  
BEST CONDITION**



**WIDE-RANGING AND FLEXIBLE  
FABRIC CAPABILITIES**



**ALWAYS FOLLOWING STATE  
OF THE ART TECHNOLOGY  
AND SHARING WITH OUR  
CLIENTS**



## **ORDER PROCESSING WORKFLOW**

### **FIRST STEP**



Simply get in touch with us. Either from whatsapp +905336144938 or you can send an email to [info@saatmantextile.com](mailto:info@saatmantextile.com)

### **SECOND STEP**



Our team members will ask you questions about your inquiry or you can describe about your needs.

As we do not provide a catalogue, please take a look at our company presentation and you can go through our previous projects and manufactured items.

### **THIRD STEP**



Tell us all about your details, thus, it will be helpful while we are preapring your samples and a detailedd quataation for main order.

### **FOURTH STEP**



Our sampling department will work on your products and its accessories.

It will take some time however this is the hardest and most difficult part before the main production.

Sorry for keep you waiting and being too sensitive on our jobs ☺

## FIFTH STEP



Some customs are difficult and sensitive to complete the import necessities. There are always unknown procedures after we export your products and while you are importing.

While our sample department is working on your products, export&import team will work with our customs agents about the destination which the goods will arrive and make your importing easier.

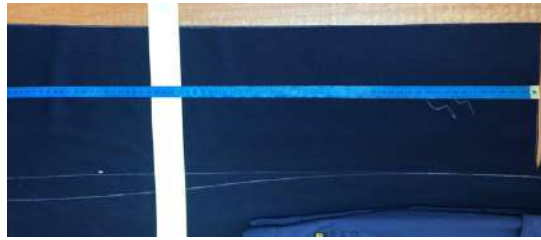
## SIXTH STEP



Samples are ready!

We will ship your samples as soon as possible and we will be looking forward to hearing back from you.

## PRODUCTION



It is no question left time! Everything is clear and we can start the main production.

Our sales and export department will be in touch constantly, inform about the production and inform you when ready to ship.

**CONGRATULATIONS!**

**YOUR ORDER IS READY TO SHIP IN OUR WAREHOUSE.**

**YOU WILL RECEIVE SHORTLY.**



**KCS TURIZM TEKSTIL OTOMOTIV AMBALAJ ITHALAT VE IHRACAT LIMITED SIRKETI**

**Kaan Saatman Uniforms, Garments & Fabrics**

**Adalet Mah. Anadolu Cad. No: 41 081 Bayrakli/Izmir-Turkey**

**E-mail: [info@saatmantextile.com](mailto:info@saatmantextile.com) Web: [www.saatmantextile.com](http://www.saatmantextile.com)**

## SCHOOL UNIFORMS

### KUWAIT ENGLISH SCHOOL AND IZMIR TURKEY SEVINC KOLEJI PROJECTS

We support that every school has its own design. After understanding what is on their mind, our manufacturing capabilities are limitless. We are very able to manufacture any kind of uniform with the highest quality and with the fair cost.



KCS TURIZM TEKSTIL OTOMOTIV AMBALAJ ITHALAT VE IHRACAT LIMITED SIRKETI  
Kaan Saatman Uniforms, Garments & Fabrics  
Adalet Mah. Anadolu Cad. No: 41 081 Bayrakli/Izmir-Turkey  
E-mail: [info@saatmantextile.com](mailto:info@saatmantextile.com) Web: [www.saatmantextile.com](http://www.saatmantextile.com)

## SCHOOL UNIFORMS



### SCHOOL POLO SHORT SLEEVE T-SHIRT

**Style no:** STMN4148 **Price:** \$7,5

**Fabric Type:** Piqué Combed Cotton

**Fabric Blend:** %80 Cotton %20 Polyester

**Fabric Weight:** 180-260gr/m2

**Size Range:** Infant School

Primary School – Secondary School

High School

**Washing Instructions:**

Warm Machine Wash

Do not Bleach

Tumble Dry

Warm Iron

Dry cleanable with care

**Certificate:** OEKO-TEX

**Customization:** School Logo Embroidered on

Left Chest

Sleeves Cuff Finished



### SCHOOL POLO LONG SLEEVE T-SHIRT

**Style no:** STMN4150 **Price:** \$8

**Fabric Type:** Piqué Combed Cotton

**Fabric Blend:** %80 Cotton %20 Polyester

**Fabric Weight:** 180-260gr/m2

**Size Range:** Infant School

Primary School – Secondary School

High School

**Washing Instructions:**

Warm Machine Wash

Do not Bleach

Tumble Dry

Warm Iron

Dry cleanable with care

**Certificate:** OEKO-TEX

**Customization:** School Logo Embroidered on

Left Chest

Sleeves Cuff Finished



**SCHOOL POLO SHORT SLEEVE T-SHIRT**

**Style no:** STMN4151 **Price:** \$7,5

**Fabric Type:** Pique Cotton

**Fabric Blend:** %80 Cotton %20 Polyester

**Fabric Weight:** 180-240gr/m2

**Size Range:** Infant School

Primary School – Secondary School

High School

**Washing Instructions:**

Warm Machine Wash

Do not Bleach

Tumble Dry

Warm Iron

Dry cleanable with care

**Certificate:** OEKO-TEX

**Customization:** School Logo Embroidered on  
Left Chest

KCS TURIZM TEKSTIL OTOMOTIV AMBALAJ ITHALAT VE IHRACAT LIMITED SIRKETI

Kaan Saatman Uniforms, Garments & Fabrics

Adalet Mah. Anadolu Cad. No: 41 081 Bayrakli/Izmir-Turkey

E-mail: [info@saatmantextile.com](mailto:info@saatmantextile.com) Web: [www.saatmantextile.com](http://www.saatmantextile.com)

## SCHOOL UNIFORMS

### Swatch Card for Pique Combed Cotton T-shirts and Sweatshirts



## SCHOOL UNIFORMS



### COMBED COTTON SHORT SLEEVE T-SHIRT

**Style no:** STMN4147 **Price:** \$6,5

**Fabric Type:** Combed Cotton

**Fabric Blend:** %80 Cotton %20 Polyester

**Fabric Weight:** 155-210gr/m2

**Size Range:** Infant School

Primary School – Secondary School

High School

**Washing Instructions:**

Warm Machine Wash

Do not Bleach

Tumble Dry

Warm Iron

Dry cleanable with care

**Certificate:** OEKO-TEX

**Customization:** School Motto Printed in the Middle

Sleeves Finishes are Coloured

KCS TURIZM TEKSTİL OTOMOTİV AMBALAJ İTHALAT VE İHRACAT LIMITED SİRKETİ

Kaan Saatman Uniforms, Garments & Fabrics

Adalet Mah. Anadolu Cad. No: 41 081 Bayraklı/Izmir-Turkey

E-mail: [info@saatmantextile.com](mailto:info@saatmantextile.com) Web: [www.saatmantextile.com](http://www.saatmantextile.com)



## SCHOOL UNIFORMS

### Swatch Cards for Combed Cotton T-Shirt



KCS TURIZM TEKSTIL OTOMOTIV AMBALAJ ITHALAT VE IHRACAT LIMITED SIRKETI

Kaan Saatman Uniforms, Garments & Fabrics

Adalet Mah. Anadolu Cad. No: 41 081 Bayrakli/Izmir-Turkey

E-mail: [info@saatmantextile.com](mailto:info@saatmantextile.com) Web: [www.saatmantextile.com](http://www.saatmantextile.com)

## SCHOOL UNIFORMS



### SCHOOL CANVAS TROUSER

**Style no:** STMN4152 **Price:** \$16

**Fabric Type:** Canvas Cotton

**Fabric Blend:** %80 Cotton - %15 Poly - %5 Lycra

**Fabric Weight:** 210-280gr/m2

**Size Range:** Infant School

Primary School – Secondary School

High School

#### **Washing Instructions:**

Warm Machine Wash

Do not Bleach

Tumble Dry

Warm Iron

Dry cleanable with care

**Certificate:** OEKO-TEX

**Customization:** School Logo Embroidered on the Right Leg

-Customized Buttons

-Adjustable Waist Measure



### SCHOOL CANVAS SHORTS

**Style no:** STMN4153 **Price:** \$14,5

**Fabric Type:** Canvas Cotton

**Fabric Blend:** %80 Cotton - %15 Poly - %5 Lycra

**Fabric Weight:** 210-280gr/m2

**Size Range:** Infant School

Primary School – Secondary School

High School

#### **Washing Instructions:**

Warm Machine Wash

Do not Bleach

Tumble Dry

Warm Iron

Dry cleanable with care

**Certificate:** OEKO-TEX

**Customization:** School Logo Embroidered on the Right Leg

-Customized Buttons

## SCHOOL UNIFORMS



### **SCHOOL CANVAS SHORTS**

**Style no:** STMN4153 **Price:** \$14,5

**Fabric Type:** Canvas Cotton

**Fabric Blend:** %80 Cotton - %15 Poly - %5 Lycra

**Fabric Weight:** 210-280gr/m2

**Size Range:** Infant School

Primary School – Secondary School

High School

### **Washing Instructions:**

Warm Machine Wash

Do not Bleach

Tumble Dry

Warm Iron

Dry cleanable with care

**Certificate:** OEKO-TEX

**Customization:** School Logo Embroidered on the  
Right Leg

-Customized Buttons



**Any type of CUSTOMIZATION** is possible at every type of uniform. We put an adjustment button into the side waist hence in case of our kids are growing every second.

## SCHOOL UNIFORMS

### Swatch Cards for Canvas Uniforms



KCS TURIZM TEKSTIL OTOMOTIV AMBALAJ ITHALAT VE IHRACAT LIMITED SIRKETI

Kaan Saatman Uniforms, Garments & Fabrics

Adalet Mah. Anadolu Cad. No: 41 081 Bayrakli/Izmir-Turkey

E-mail: [info@saatmantextile.com](mailto:info@saatmantextile.com) Web: [www.saatmantextile.com](http://www.saatmantextile.com)

## SCHOOL UNIFORMS



### SCHOOL TRACKING SUITS

**Style no:** STMN4154 **Price:** \$38

**Fabric Type:** 3 Yarn Fabric/Triple Knit Fabric

**Fabric Content:** %100 Cotton

**Fabric Weight:** 220-310gr/m2

**Size Range:** Infant School

Primary School – Secondary School

High School

#### **Washing Instructions:**

Warm Machine Wash

Do not Bleach

Tumble Dry

Warm Iron

Dry cleanable with care

**Certificate:** OEKO-TEX

**Customization:** School Logo Embroidered on the Left Chest

-Customized Zipper and Labeling

-Lines on the Sleeves

-Applique School Name on the Left Leg

-Cuffs Finished on the Arms and Bottom

KCS TURIZM TEKSTIL OTOMOTIV AMBALAJ ITHALAT VE IHRACAT LIMITED SIRKETI

Kaan Saatman Uniforms, Garments & Fabrics

Adalet Mah. Anadolu Cad. No: 41 081 Bayrakli/Izmir-Turkey

E-mail: [info@saatmantextile.com](mailto:info@saatmantextile.com) Web: [www.saatmantextile.com](http://www.saatmantextile.com)

## TRACKING SUITS



### **SCHOOL TRACKING SUITS**

**Style no:** STMN4155 **Price:** \$38

**Fabric Type:** 3 Yarn Fabric/Triple Knit Fabric

**Fabric Blend:** %100 Cotton

**Fabric Weight:** 220-310gr/m2

**Size Range:** Infant School

Primary School – Secondary School

High School

#### **Washing Instructions:**

Warm Machine Wash

Do not Bleach

Tumble Dry

Warm Iron

Dry cleanable with care

**Certificate:** OEKO-TEX

**Customization:** School Logo Embroidered on the Left Chest

-Customized Zipper and Labeling

-Lines on the Sleeves

-Applique School Name on the Left Leg

-Cuffs Finished on the Arms and Bottom

KCS TURIZM TEKSTIL OTOMOTIV AMBALAJ ITHALAT VE IHRACAT LIMITED SIRKETI

Kaan Saatman Uniforms, Garments & Fabrics

Adalet Mah. Anadolu Cad. No: 41 081 Bayrakli/Izmir-Turkey

E-mail: [info@saatmantextile.com](mailto:info@saatmantextile.com) Web: [www.saatmantextile.com](http://www.saatmantextile.com)



**SCHOOL TRACKING SUIT**

**Style no:** STMN4155 **Price:** \$38

**Fabric Type:** 3 Yarn Fabric/Triple Knit Fabric

**Fabric Blend:** %100 Cotton

**Fabric Weight:** 220-310gr/m2

**Size Range:** Infant School

Primary School – Secondary School

High School

**Washing Instructions:**

Warm Machine Wash

Do not Bleach

Tumble Dry

Warm Iron

Dry cleanable with care

**Certificate:** OEKO-TEX

**Customization:** School Logo Embroidered on the Left Chest

-Customized Zipper and Labeling

-Lines on the Sleeves

-Applique School Name on the Left Leg

-Cuffs Finished on the Arms and Bottom

KCS TURIZM TEKSTIL OTOMOTIV AMBALAJ ITHALAT VE IHRACAT LIMITED SIRKETI

Kaan Saatman Uniforms, Garments & Fabrics

Adalet Mah. Anadolu Cad. No: 41 081 Bayrakli/Izmir-Turkey

E-mail: [info@saatmantextile.com](mailto:info@saatmantextile.com) Web: [www.saatmantextile.com](http://www.saatmantextile.com)

## SCHOOL UNIFORMS



### SCHOOL TRACKING SHORTS

**Style no:** STMN4156 **Price:** \$11

**Fabric Type:** 3 Yarn Fabric/Triple Knit Fabric

**Fabric Content:** %100 Cotton

**Fabric Weight:** 220-310gr/m2

**Size Range:** Infant School

Primary School – Secondary School

High School

**Washing Instructions:**

Warm Machine Wash

Do not Bleach

Tumble Dry

Warm Iron

Dry cleanable with care

**Certificate:** OEKO-TEX

**Customization:** School Logo Embroidered on the  
Left Leg





## P.E. T-SHIRT AND SHORTS



### P.E. T-SHIRTS AND SHORTS

**Shirt - Style no:** STMN4157 **Price:** \$12

**Short - Style no:** STMN4173 **Price:** \$8

**Fabric Type:** DRY-TOUCH

**Fabric Blend:** %100 (Polyester) POY

**Fabric Weight:** 150-280gr/m2

**Size Range:** Infant School

Primary School – Secondary School

High School

#### **Washing Instructions:**

Warm Machine Wash

Do not Bleach

Tumble Dry

Warm Iron

Dry cleanable with care

**Certificate:** OEKO-TEX

**Customization:** School Logo Embroidered on the

Left Leg and on the Back

-Lines on the Sides Matching to School Logo



KCS TURIZM TEKSTIL OTOMOTIV AMBALAJ ITHALAT VE IHRACAT LIMITED SIRKETI

Kaan Saatman Uniforms, Garments & Fabrics

Adalet Mah. Anadolu Cad. No: 41 081 Bayrakli/Izmir-Turkey

E-mail: [info@saatmantextile.com](mailto:info@saatmantextile.com) Web: [www.saatmantextile.com](http://www.saatmantextile.com)

## P.E. T-SHIRT AND SHORTS



### **P.E. T-SHIRTS AND SHORTS**

**Style no:** STMN4158 **Price:** \$12

**Fabric Type:** DRY-TOUCH

**Fabric Blend:** %100 (Polyester) POY

**Fabric Weight:** 150-280gr/m2

**Size Range:** Infant School

Primary School – Secondary School

High School

#### **Washing Instructions:**

Warm Machine Wash

Do not Bleach

Tumble Dry

Warm Iron

Dry cleanable with care

**Certificate:** OEKO-TEX

**Customization:** School Logo Embroidered on the

KCS TURIZM TEKSTIL OTOMOTIV AMBALAJ ITHALAT VE IHRACAT LIMITED SIRKETI

Kaan Saatman Uniforms, Garments & Fabrics

Adalet Mah. Anadolu Cad. No: 41 081 Bayrakli/Izmir-Turkey

E-mail: [info@saatmantextile.com](mailto:info@saatmantextile.com) Web: [www.saatmantextile.com](http://www.saatmantextile.com)

## PULLOVER



### **SCHOOL PULLOVER**

**Style no:** STMN4159 **Price:** \$21

**Fabric Type:** Cardigan Fabric

**Fabric Content:** %100 Cotton

**Fabric Weight:** 230-295gr/m2

**Size Range:** Infant School

Primary School – Secondary School

High School

**Washing Instructions:**

Warm Machine Wash

Do not Bleach

Tumble Dry

Warm Iron

Dry cleanable with care

**Certificate:** OEKO-TEX

**Customization:** School Logo Embroidered on the  
Left Chest

-Metal Pins on the Side Pockets

## SCHOOL UNIFORMS

### Swatch Cards for Hoodies, Tracking Suits and Sweaters.



## SCHOOL UNIFORMS



### **PLEATED SKIRT**

**Style no:** STMN4160 **Price:** \$16

**Fabric Type:** Gabardine

**Fabric Content:** %100 Cotton

**Fabric Weight:** 210-305gr/m2

**Size Range:** Infant School

Primary School – Secondary School

High School

### **Washing Instructions:**

Warm Machine Wash

Do not Bleach

Tumble Dry

Warm Iron

Dry cleanable with care

**Certificate:** OEKO-TEX



KCS TURIZM TEKSTIL OTOMOTIV AMBALAJ ITHALAT VE IHRACAT LIMITED SIRKETI

Kaan Saatman Uniforms, Garments & Fabrics

Adalet Mah. Anadolu Cad. No: 41 081 Bayrakli/Izmir-Turkey

E-mail: [info@saatmantextile.com](mailto:info@saatmantextile.com) Web: [www.saatmantextile.com](http://www.saatmantextile.com)

## SKIRTS



### **PENCIL SKIRT**

**Style no:** STMN4161 **Price:** \$14

**Fabric Type:** Gabardine

**Fabric Blend:** %100 Cotton

**Fabric Weight:** 210-305gr/m2

**Size Range:** Infant School

Primary School – Secondary School

High School

**Washing Instructions:**

Warm Machine Wash

Do not Bleach

Tumble Dry

Warm Iron

Dry cleanable with care

**Certificate:** OEKO-TEX



KCS TURIZM TEKSTIL OTOMOTIV AMBALAJ ITHALAT VE IHRACAT LIMITED SIRKETI

Kaan Saatman Uniforms, Garments & Fabrics

Adalet Mah. Anadolu Cad. No: 41 081 Bayrakli/Izmir-Turkey

E-mail: [info@saatmantextile.com](mailto:info@saatmantextile.com) Web: [www.saatmantextile.com](http://www.saatmantextile.com)

## WORK UNIFORMS

We do believe that;

- Your employees must feel safe and comfortable during work,
- Purchasing department must keep the cost under control and affordable during purchasing and after,
- Management and Customers must see that uniforms represent the company with its best reputation.

We care of these three things and more. When you tell your expectations, you will see that all of your needs will be met.



## WORK UNIFORMS



### **SWEATSHIRT (HOODIE) WORKWEAR**

**Style no:** STMN4162 **Price:** \$16

**Fabric Type:** 3 Ply Fleece

**Fabric Content:** %100 Cotton

**Fabric Weight:** 220-300gr/m2

**Size Range:** XXS – 8XL

#### **Washing Instructions:**

Warm Machine Wash

Do not Bleach

Tumble Dry

Warm Iron

Dry cleanable with care

If there is and embroidery on the item, wash reversely.

**Certificate:** OEKO-TEX

**Customization:** Company Logo Embroidered on the Left Chest





## WORK UNIFORMS



### POLO T-SHIRT SHORT SLEEVE

**Style no:** STMN4163 **Price:** \$8,5

**Fabric Type:** Pique Combed Cotton

**Fabric Content:** %80 Cotton - % 20 Polyester

**Fabric Weight:** 180-240gr/m2

**Size Range:** XXS – 8XL

#### **Washing Instructions:**

Warm Machine Wash

Do not Bleach

Tumble Dry

Warm Iron

Dry cleanable with care

If there is and embroidery on the item, wash reversely.

**Certificate:** OEKO-TEX

**Customization:** Company Logo Printed on the Left Chest and on the Back



## WORK UNIFORMS



### **V-NECK COLOURED T-SHIRT SHORT SLEEVE**

**Style no:** STMN4164 **Price:** \$8,5

**Fabric Type:** Pique Combed Cotton

**Fabric Content:** %80 Cotton - % 20 Polyester

**Fabric Weight:** 180-240gr/m2

**Size Range:** XXS – 8XL

#### **Washing Instructions:**

Warm Machine Wash

Do not Bleach

Tumble Dry

Warm Iron

Dry cleanable with care

If there is and embroidery on the item, wash reversely.

**Certificate:** OEKO-TEX

#### **Customization:**

Collars and Finish of Sleeves Coloured

Company Logo Printed on the Left Chest and on the Back



We will customize each of uniform according to your needs. Any part of the uniform can be detailed as you need.

## WORK UNIFORMS



### **V-NECK COLOURED T-SHIRT SHORT SLEEVE**

**Style no:** STMN4164 **Price:** \$8,5

**Fabric Type:** Pique Combed Cotton

**Fabric Content:** %80 Cotton - % 20 Polyester

**Fabric Weight:** 180-240gr/m2

**Size Range:** XXS – 8XL

#### **Washing Instructions:**

Warm Machine Wash

Do not Bleach

Tumble Dry

Warm Iron

Dry cleanable with care

If there is and embroidery on the item, wash reversely.

**Certificate:** OEKO-TEX

#### **Customization:**

Collars and Finish of Sleeves Coloured

Company Logo Printed on the Left Chest and on the Back



We are aware of sometimes your uniforms needs to be separated of each other according to departments or lot of sections in the same department.

As seen in the picture, we finished the sleeves with different colors as we were requested so everyone in the company can identify which team member is working at which department.

## WORK UNIFORMS

### Swatch Card for Pique Combed Cotton T-shirts and Sweatshirts



KCS TURIZM TEKSTIL OTOMOTIV AMBALAJ ITHALAT VE IHRACAT LIMITED SIRKETI

Kaan Saatman Uniforms, Garments & Fabrics

Adalet Mah. Anadolu Cad. No: 41 081 Bayrakli/Izmir-Turkey

E-mail: [info@saatmantextile.com](mailto:info@saatmantextile.com) Web: [www.saatmantextile.com](http://www.saatmantextile.com)

## WORK UNIFORMS



### **POLO T-SHIRT SHORT SLEEVE**

**Style no:** STMN4165 **Price:** \$7,5

**Fabric Type:** Combed Cotton

**Fabric Content:** %80 Cotton - % 20 Polyester

**Fabric Weight:** 155-210gr/m2

**Size Range:** XXS – 8XL

#### **Washing Instructions:**

Warm Machine Wash

Do not Bleach

Tumble Dry

Warm Iron

Dry cleanable with care

If there is and embroidery on the item, wash reversely.

**Certificate:** OEKO-TEX

#### **Customization:**

Collars and Finish of Sleeves Coloured

Company Logo Embroidered on the Left Chest (on the Pocket) and on the Left Sleeve



KCS TURIZM TEKSTIL OTOMOTIV AMBALAJ ITHALAT VE IHRACAT LIMITED SIRKETI

Kaan Saatman Uniforms, Garments & Fabrics

Adalet Mah. Anadolu Cad. No: 41 081 Bayrakli/Izmir-Turkey

E-mail: [info@saatmantextile.com](mailto:info@saatmantextile.com) Web: [www.saatmantextile.com](http://www.saatmantextile.com)

## WORK UNIFORMS

### Swatch Cards for Combed Cotton T-shirts



## WORK UNIFORMS



### POLO T-SHIRT SHORT SLEEVE

**Style no:** STMN4166 **Price:** \$9

**Fabric Type:** Pique Combed Cotton

**Fabric Content:** %80 Cotton - % 20 Polyester

**Fabric Weight:** 200gr/m2

**Size Range:** XXS – 8XL

#### **Washing Instructions:**

Warm Machine Wash

Do not Bleach

Tumble Dry

Warm Iron

Dry cleanable with care

If there is and embroidery on the item, wash reversely.

**Certificate:** OEKO-TEX

#### **Customization:**

Collars and Finish of Sleeves Lined

Company Logo Embroidered on the Left Chest

### WORK TROUSER

**Style no:** STMN4167 **Price:** \$19

**Fabric Type:** 16/12 Gabardine

**Fabric Content:** %40 Cotton - % 60 Polyester

**Fabric Weight:** 270gr/m2

**Size Range:** XXS – 8XL

#### **Washing Instructions:**

Warm Machine Wash

Do not Bleach

Tumble Dry

Warm Iron

Dry cleanable with care

If there is and embroidery on the item, wash reversely.

**Certificate:** OEKO-TEX

#### **Customization:**

-Company Logo Printed on the Left Pocket

-Cargo Pockets on the Sides

-Reflector on the Legs

KCS TURIZM TEKSTIL OTOMOTIV AMBALAJ ITHALAT VE IHRACAT LIMITED SIRKETI

Kaan Saatman Uniforms, Garments & Fabrics

Adalet Mah. Anadolu Cad. No: 41 081 Bayrakli/Izmir-Turkey

E-mail: [info@saatmantextile.com](mailto:info@saatmantextile.com) Web: [www.saatmantextile.com](http://www.saatmantextile.com)

## WORK UNIFORMS



### WORK VEST

**Style no:** STMN4168 **Price:** \$18

**Fabric Type:** 16/12 Gabardine

**Fabric Content:** %40 Cotton - % 60 Polyester

**Fabric Weight:** 270gr/m2

**Size Range:** XXS – 8XL

#### **Washing Instructions:**

Warm Machine Wash

Do not Bleach

Tumble Dry

Warm Iron

Dry cleanable with care

If there is and embroidery on the item, wash reversely.

**Certificate:** OEKO-TEX

#### **Customization:**

-Company Logo Printed on the Left Chest

-Company Motto Printed on the Back

KCS TURIZM TEKSTIL OTOMOTIV AMBALAJ ITHALAT VE IHRACAT LIMITED SIRKETI

Kaan Saatman Uniforms, Garments & Fabrics

Adalet Mah. Anadolu Cad. No: 41 081 Bayrakli/Izmir-Turkey

E-mail: [info@saatmantextile.com](mailto:info@saatmantextile.com) Web: [www.saatmantextile.com](http://www.saatmantextile.com)



## WORK UNIFORMS



### **WORK TROUSER**

**Style no:** STMN4169 **Price:** \$21

**Fabric Type:** 16/12 Gabardine

**Fabric Content:** %40 Polyester - % 60 Cotton

**Fabric Weight:** 220-300gr/m2

**Size Range:** XXS – 8XL

#### **Washing Instructions:**

Warm Machine Wash

Do not Bleach

Tumble Dry

Warm Iron

Dry cleanable with care

If there is and embroidery on the item, wash reversely.

**Certificate:** OEKO-TEX

#### **Customization:**

-Company Logo Printed

-Company Motto at the back



### **CUSTOMIZATION:**

We are always looking for ways to reflect your company's logo and colors on the uniforms.

**As you can see on pictures, we placed Yellow and Red reflectors on the legs and company logo at the rear leg.**

## WORK UNIFORMS

### Swatch Cards for Work Trousers and Work Vest



## WORK UNIFORMS



### **POLO T-SHIRT LONG SLEEVE (SHIRT COLLAR)**

**Style no:** STMN4170 **Price:** \$13

**Fabric Type:** Pique Combed Cotton

**Fabric Content:** %80 Cotton - % 20 Polyester

**Fabric Weight:** 190-230gr/m2

**Size Range:** XXS – 8XL

**Washing Instructions:**

Warm Machine Wash

Do not Bleach

Tumble Dry

Warm Iron

Dry cleanable with care

If there is and embroidery on the item, wash reversely.

**Certificate:** OEKO-TEX

**Customization:**

Collar is Made of Shirt Collar

Company Logo Embroidered on the Left Chest

### **COVERALL**

**Style no:** STMN4171 **Price:** \$18

**Fabric Type:** 16/12 Gabardine

**Fabric Content:** %40 Cotton - % 60 Polyester

**Fabric Weight:** 270gr/m2

**Size Range:** XXS – 8XL

**Washing Instructions:**

Warm Machine Wash

Do not Bleach

Tumble Dry

Warm Iron

Dry cleanable with care

If there is and embroidery on the item, wash reversely.

**Certificate:** OEKO-TEX

**Customization:**

-Company Logo Embroidered in the Middle

## WORK UNIFORMS



### **POLO T-SHIRT LONG SLEEVE (SHIRT COLLAR)**

**Style no:** STMN4170 **Price:** \$13

**Fabric Type:** Pique Combed Cotton

**Fabric Content:** %80 Cotton - % 20 Polyester

**Fabric Weight:** 200gr/m2

**Size Range:** XXS – 8XL

#### **Washing Instructions:**

Warm Machine Wash

Do not Bleach

Tumble Dry

Warm Iron

Dry cleanable with care

If there is and embroidery on the item, wash reversely.

**Certificate:** OEKO-TEX

#### **Customization:**

Collar is Made of Shirt Collar

Company Logo Embroidered on the Left Chest



KCS TURIZM TEKSTIL OTOMOTIV AMBALAJ ITHALAT VE IHRACAT LIMITED SIRKETI

Kaan Saatman Uniforms, Garments & Fabrics

Adalet Mah. Anadolu Cad. No: 41 081 Bayrakli/Izmir-Turkey

E-mail: [info@saatmantextile.com](mailto:info@saatmantextile.com) Web: [www.saatmantextile.com](http://www.saatmantextile.com)

## WORK UNIFORMS



### **WORK VEST**

**Style no:** STMN4172 **Price:** \$17

**Fabric Type:** 16/12 Gabardine

**Fabric Content:** %40 Cotton - % 60 Polyester

**Fabric Weight:** 270gr/m2

**Size Range:** XXS – 8XL

#### **Washing Instructions:**

Warm Machine Wash

Do not Bleach

Tumble Dry

Warm Iron

Dry cleanable with care

If there is and embroidery on the item, wash reversely.

**Certificate:** OEKO-TEX

#### **Customization:**

-Reflector on the front

-Customer Tailored Pockets on the Front



KCS TURIZM TEKSTIL OTOMOTIV AMBALAJ ITHALAT VE IHRACAT LIMITED SIRKETI

Kaan Saatman Uniforms, Garments & Fabrics

Adalet Mah. Anadolu Cad. No: 41 081 Bayrakli/Izmir-Turkey

E-mail: [info@saatmantextile.com](mailto:info@saatmantextile.com) Web: [www.saatmantextile.com](http://www.saatmantextile.com)

## WORK UNIFORMS

### Swatch Cards for Work Vest



## WORK UNIFORMS



### WORK COAT

**Style no:** STMN6070 **Price:** \$38

**Fabric Type:** 16/12 Gabardine

**Fabric Content:** %40 Cotton - % 60 Polyester

**Fabric Weight:** 230-390gr/m2

**Size Range:** XXS – 8XL

#### **Washing Instructions:**

Warm Machine Wash

Do not Bleach

Tumble Dry

Warm Iron

Dry cleanable with care

If there is and embroidery on the item, wash reversely.

**Certificate:** OEKO-TEX

#### **Customization:**

-Reflector on the front

-Customer Tailored Pockets on the Front

-Customer Tailored Zipper

**Style no:** STMN6073 **Price:** \$3,5

**Any type of CUSTOMIZATION** is possible at every type of ACCESSORIZES.

We produced a special glider customer tailored and reflected company's identity on the uniforms.

## ORGANIC PRODUCTION WITH ORGANIC COTTON

Organic cotton production works start at 1970's, together with establishing environmental consciousness development in many countries.

One of the biggest factors in environmental pollution is the agricultural pollution and it occurs using chemical/synthetic stuff without care of natural life balance. Such stuff penetrates into agricultural soil and effects growing of natural plants like cotton. Organic cotton is producing completely natural ways by comparing to conventional cotton and no chemicals using its growing cycle and its manufacturing process to prevent any residues.

Ecologic textiles (or eco-textile in other words) are the products made by caring the total environmental protection in all production steps from the fiber form to finished goods. Ecologic products are not harmful in use by the consumer and also able to recycle or able to dissolve in nature without any harmful residue after their using period.



## ORGANIC PRODUCTION WITH ORGANIC COTTON



**Fabric Type:** Organic Cotton

**Fabric Content:** %100 Organic Cotton

**Size Range:** Newborn – Adult Ages

**Washing Instructions:**

Warm Machine Wash

Do not Bleach

Tumble Dry

Warm Iron

Dry cleanable with care

If there is and embroidery on the item, wash reversely.

**Certificate:** OEKO-TEX

**Customization:** Customer Tailored

Customizations are always available and looking forward to discuss about it.



KCS TURIZM TEKSTIL OTOMOTIV AMBALAJ ITHALAT VE IHRACAT LIMITED SIRKETI

Kaan Saatman Uniforms, Garments & Fabrics

Adalet Mah. Anadolu Cad. No: 41 081 Bayrakli/Izmir-Turkey

E-mail: [info@saatmantextile.com](mailto:info@saatmantextile.com) Web: [www.saatmantextile.com](http://www.saatmantextile.com)

## ORGANIC PRODUCTION WITH ORGANIC COTTON



**Fabric Type:** Organic Cotton

**Fabric Content:** %100 Organic Cotton

**Size Range:** Newborn – Adult Ages

**Washing Instructions:**

Warm Machine Wash

Do not Bleach

Tumble Dry

Warm Iron

Dry cleanable with care

If there is and embroidery on the item, wash reversely.

**Certificate:** OEKO-TEX

**Customization:** Customer Tailored

Customizations are always available and looking forward to discuss about it.



KCS TURIZM TEKSTIL OTOMOTIV AMBALAJ ITHALAT VE IHRACAT LIMITED SIRKETI

Kaan Saatman Uniforms, Garments & Fabrics

Adalet Mah. Anadolu Cad. No: 41 081 Bayrakli/Izmir-Turkey

E-mail: [info@saatmantextile.com](mailto:info@saatmantextile.com) Web: [www.saatmantextile.com](http://www.saatmantextile.com)

## ORGANIC PRODUCTION WITH ORGANIC COTTON



**Fabric Type:** Organic Cotton

**Fabric Content:** %100 Organic Cotton

**Size Range:** Newborn – Adult Ages

**Washing Instructions:**

Warm Machine Wash

Do not Bleach

Tumble Dry

Warm Iron

Dry cleanable with care

If there is and embroidery on the item, wash reversely.

**Certificate:** OEKO-TEX

**Customization:** Customer Tailored

Customizations are always available and looking forward to discuss about it.

## ORGANIC PRODUCTION WITH ORGANIC COTTON



**Fabric Type:** Organic Cotton

**Fabric Content:** %100 Organic Cotton

**Size Range:** Newborn – Adult Ages

**Washing Instructions:**

Warm Machine Wash

Do not Bleach

Tumble Dry

Warm Iron

Dry cleanable with care

If there is and embroidery on the item, wash reversely.

**Certificate:** OEKO-TEX

**Customization:** Customer Tailored

Customizations are always available and looking forward to discuss about it.



KCS TURIZM TEKSTIL OTOMOTIV AMBALAJ ITHALAT VE IHRACAT LIMITED SIRKETI

Kaan Saatman Uniforms, Garments & Fabrics

Adalet Mah. Anadolu Cad. No: 41 081 Bayrakli/Izmir-Turkey

E-mail: [info@saatmantextile.com](mailto:info@saatmantextile.com) Web: [www.saatmantextile.com](http://www.saatmantextile.com)

## ORGANIC PRODUCTION WITH ORGANIC COTTON



**Fabric Type:** Organic Cotton

**Fabric Content:** %100 Organic Cotton

**Size Range:** Newborn – Adult Ages

**Washing Instructions:**

Warm Machine Wash

Do not Bleach

Tumble Dry

Warm Iron

Dry cleanable with care

If there is and embroidery on the item, wash reversely.

**Certificate:** OEKO-TEX

**Customization:** Customer Tailored

Customizations are always available and looking forward to discuss about it.



KCS TURIZM TEKSTIL OTOMOTIV AMBALAJ ITHALAT VE IHRACAT LIMITED SIRKETI

Kaan Saatman Uniforms, Garments & Fabrics

Adalet Mah. Anadolu Cad. No: 41 081 Bayrakli/Izmir-Turkey

E-mail: [info@saatmantextile.com](mailto:info@saatmantextile.com) Web: [www.saatmantextile.com](http://www.saatmantextile.com)

## ORGANIC PRODUCTION WITH ORGANIC COTTON



**Fabric Type:** Organic Cotton

**Fabric Content:** %100 Organic Cotton

**Size Range:** Newborn – Adult Ages

**Washing Instructions:**

Warm Machine Wash

Do not Bleach

Tumble Dry

Warm Iron

Dry cleanable with care

If there is and embroidery on the item, wash reversely.

**Certificate:** OEKO-TEX

**Customization:** Customer Tailored

Customizations are always available and looking forward to discuss about it.



KCS TURIZM TEKSTIL OTOMOTIV AMBALAJ ITHALAT VE IHRACAT LIMITED SIRKETI

Kaan Saatman Uniforms, Garments & Fabrics

Adalet Mah. Anadolu Cad. No: 41 081 Bayrakli/Izmir-Turkey

E-mail: [info@saatmantextile.com](mailto:info@saatmantextile.com) Web: [www.saatmantextile.com](http://www.saatmantextile.com)

## ORGANIC PRODUCTION WITH ORGANIC COTTON



**Fabric Type:** Organic Cotton

**Fabric Content:** %100 Organic Cotton

**Size Range:** Newborn – Adult Ages

**Washing Instructions:**

Warm Machine Wash

Do not Bleach

Tumble Dry

Warm Iron

Dry cleanable with care

If there is and embroidery on the item, wash reversely.

**Certificate:** OEKO-TEX

**Customization:** Customer Tailored

Customizations are always available and looking forward to discuss about it.



KCS TURIZM TEKSTIL OTOMOTIV AMBALAJ ITHALAT VE IHRACAT LIMITED SIRKETI

Kaan Saatman Uniforms, Garments & Fabrics

Adalet Mah. Anadolu Cad. No: 41 081 Bayrakli/Izmir-Turkey

E-mail: [info@saatmantextile.com](mailto:info@saatmantextile.com) Web: [www.saatmantextile.com](http://www.saatmantextile.com)

## ORGANIC PRODUCTION WITH ORGANIC COTTON



**Fabric Type:** Organic Cotton **Fabric Content:** %100 Organic Cotton **Size Range:** Newborn – Adult Ages

**Washing Instructions:** Warm Machine Wash, Do Not Bleach, Tumble Dry, Warm Iron, Dry cleanable with care  
If there is and embroidery on the item, wash reversely.

**Certificate:** OEKO-TEX

**Customization:** Customer Tailored Customizations are always available and looking forward to discuss about it.



KCS TURIZM TEKSTIL OTOMOTIV AMBALAJ ITHALAT VE IHRACAT LIMITED SIRKETI  
Kaan Saatman Uniforms, Garments & Fabrics  
Adalet Mah. Anadolu Cad. No: 41 081 Bayrakli/Izmir-Turkey  
E-mail: [info@saatmantextile.com](mailto:info@saatmantextile.com) Web: [www.saatmantextile.com](http://www.saatmantextile.com)



## ORGANIC PRODUCTION WITH ORGANIC COTTON



**Fabric Type:** Organic Cotton

**Fabric Content:** %100 Organic Cotton

**Size Range:** Newborn – Adult Ages

**Washing Instructions:** Warm Machine Wash, Do Not Bleach, Tumble Dry, Warm Iron, Dry cleanable with care

If there is and embroidery on the item, wash reversely.

**Certificate:** OEKO-TEX

**Customization:** Customer Tailored Customizations are always available and looking forward to discuss about it.

## LUXURY UNIFORMS

From accessorizes to very special fabrics, all of metarials for the luxury uniforms, will be produced spacially for you. Saatman Textile is specialized in the production of clothes and accessories of all kinds, tailor-made, conveying the image of private and public companies.

Our goal in Luxury Uniforms is always reflecting your Company's Motto gently on the uniforms.



## LUXURY UNIFORMS



### VEST

**Style no:** STMN8001 **Price:** \$26

**Fabric Type:** ALTINYILDIZ ZETA Gabardine

**Fabric Content:** %44 Wool - %54 Poly - %2 Lycra

**Fabric Weight:** 220gr/m2

**Size Range:** 30-72 for Women and Men

#### **Washing Instructions:**

Warm Machine Wash

Do not Bleach

Tumble Dry

Warm Iron

Dry cleanable with care

**Certificate:** OEKO-TEX

**Customization:** Company Logo Embroidered on the Right Chest

-Name Tag on Left Chest

-Coloured Adjustment on the Back

-Company Logo Embroidery on the Sleeves

-Printed Lining on the Back

KCS TURIZM TEKSTIL OTOMOTIV AMBALAJ ITHALAT VE IHRACAT LIMITED SIRKETI

Kaan Saatman Uniforms, Garments & Fabrics

Adalet Mah. Anadolu Cad. No: 41 081 Bayrakli/Izmir-Turkey

E-mail: [info@saatmantextile.com](mailto:info@saatmantextile.com) Web: [www.saatmantextile.com](http://www.saatmantextile.com)

## LUXURY UNIFORMS



Style no: STMN8001 Price: \$26

**CUSTOMIZATION:** We are always looking for ways to reflect your company's logo and colors on the uniforms. As you can see on pictures, Yellow and Red are reflected on the uniforms as on the Logos.



KCS TURIZM TEKSTIL OTOMOTIV AMBALAJ ITHALAT VE IHRACAT LIMITED SIRKETI  
Kaan Saatman Uniforms, Garments & Fabrics  
Adalet Mah. Anadolu Cad. No: 41 081 Bayrakli/Izmir-Turkey  
E-mail: [info@saatmantextile.com](mailto:info@saatmantextile.com) Web: [www.saatmantextile.com](http://www.saatmantextile.com)

## LUXURY UNIFORMS



### BLAZER

**Style no:** STMN8002 **Price:** \$44

**Fabric Type:** ALTINYILDIZ ZETA Gabardine

**Fabric Content:** %44 Wool - %54 Poly - %2 Lycra

**Fabric Weight:** 220-300gr/m2

**Size Range:** 30-72 for Women and Men

### **Washing Instructions:**

Warm Machine Wash

Do not Bleach

Tumble Dry

Warm Iron

Dry cleanable with care

**Certificate:** OEKO-TEX

**Customization:** Symbol Embroidered on the Left

Collar

-Name Tag on Left Chest

-Company Logo Embroidery on the Sleeves

-Printed Inner Lining



## LUXURY UNIFORMS

KCS TURIZM TEKSTIL OTOMOTIV AMBALAJ ITHALAT VE IHRACAT LIMITED SIRKETI

Kaan Saatman Uniforms, Garments & Fabrics

Adalet Mah. Anadolu Cad. No: 41 081 Bayrakli/Izmir-Turkey

E-mail: [info@saatmantextile.com](mailto:info@saatmantextile.com) Web: [www.saatmantextile.com](http://www.saatmantextile.com)



### **LUXURY UNIFORMS**

KCS TURIZM TEKSTIL OTOMOTIV AMBALAJ ITHALAT VE IHRACAT LIMITED SIRKETI

Kaan Saatman Uniforms, Garments & Fabrics

Adalet Mah. Anadolu Cad. No: 41 081 Bayrakli/Izmir-Turkey

E-mail: [info@saatmantextile.com](mailto:info@saatmantextile.com) Web: [www.saatmantextile.com](http://www.saatmantextile.com)

**Swatch Cards for;**

**Trousers,**

**Skirts,**

**Blazers and**

**Vests**



KCS TURIZM TEKSTIL OTOMOTIV AMBALAJ ITHALAT VE IHRACAT LIMITED SIRKETI

Kaan Saatman Uniforms, Garments & Fabrics

Adalet Mah. Anadolu Cad. No: 41 081 Bayrakli/Izmir-Turkey

E-mail: [info@saatmantextile.com](mailto:info@saatmantextile.com) Web: [www.saatmantextile.com](http://www.saatmantextile.com)

## CORPORATE UNIFORMS



### **BUTTON DOWN WOMEN SHIRT**

**Style no:** STMN8003 **Price:** \$16

**Fabric Type:** Polyviscon

**Fabric Content:** %60 Cotton - %40 Polyester

**Fabric Weight:** 180-230gr/m2

**Size Range:** 30-72 for Women and Men

XXS-8XL

#### **Washing Instructions:**

Warm Machine Wash

Do not Bleach

Tumble Dry

Warm Iron

Dry cleanable with care

**Certificate:** OEKO-TEX



KCS TURIZM TEKSTIL OTOMOTIV AMBALAJ ITHALAT VE IHRACAT LIMITED SIRKETI

Kaan Saatman Uniforms, Garments & Fabrics

Adalet Mah. Anadolu Cad. No: 41 081 Bayrakli/Izmir-Turkey

E-mail: [info@saatmantextile.com](mailto:info@saatmantextile.com) Web: [www.saatmantextile.com](http://www.saatmantextile.com)



## CORPORATE UNIFORMS



### **BUTTON DOWN MEN SHIRT**

**Style no:** STMN8004 **Price:** \$16

**Fabric Type:** Polyviscon

**Fabric Content:** %60 Cotton - %40 Polyester

**Fabric Weight:** 180-230gr/m2

**Size Range:** 30-72 for Women and Men

XXS-8XL

#### **Washing Instructions:**

Warm Machine Wash

Do not Bleach

Tumble Dry

Warm Iron

Dry cleanable with care

**Certificate:** OEKO-TEX



KCS TURIZM TEKSTIL OTOMOTIV AMBALAJ ITHALAT VE IHRACAT LIMITED SIRKETI

Kaan Saatman Uniforms, Garments & Fabrics

Adalet Mah. Anadolu Cad. No: 41 081 Bayrakli/Izmir-Turkey

E-mail: [info@saatmantextile.com](mailto:info@saatmantextile.com) Web: [www.saatmantextile.com](http://www.saatmantextile.com)

## CORPORATE UNIFORMS



### **Women's Dress**

**Style no:** STMN8005 **Price:** \$37

**Fabric Type:** Gabardine

**Fabric Content:** %50 Cotton - %40 Polyester -  
%10 Lycra

**Fabric Weight:** 220gr/m2

**Size Range:** 30-72

### **Washing Instructions:**

Warm Machine Wash

Do not Bleach

Tumble Dry

Warm Iron

Dry cleanable with care

**Certificate:** OEKO-TEX



KCS TURIZM TEKSTIL OTOMOTIV AMBALAJ ITHALAT VE IHRACAT LIMITED SIRKETI

Kaan Saatman Uniforms, Garments & Fabrics

Adalet Mah. Anadolu Cad. No: 41 081 Bayrakli/Izmir-Turkey

E-mail: [info@saatmantextile.com](mailto:info@saatmantextile.com) Web: [www.saatmantextile.com](http://www.saatmantextile.com)

## CORPORATE UNIFORMS



### **Men's Trouser**

**Style no:** STMN8006 **Price:** \$28

**Fabric Type:** Gabardine

**Fabric Content:** %50 Cotton - %40 Polyester -  
%10 Lycra

**Fabric Weight:** 220gr/m2

**Size Range:** 32-70

### **Washing Instructions:**

Warm Machine Wash

Do not Bleach

Tumble Dry

Warm Iron

Dry cleanable with care

**Certificate:** OEKO-TEX



KCS TURIZM TEKSTIL OTOMOTIV AMBALAJ ITHALAT VE IHRACAT LIMITED SIRKETI

Kaan Saatman Uniforms, Garments & Fabrics

Adalet Mah. Anadolu Cad. No: 41 081 Bayrakli/Izmir-Turkey

E-mail: [info@saatmantextile.com](mailto:info@saatmantextile.com) Web: [www.saatmantextile.com](http://www.saatmantextile.com)

## CORPORATE UNIFORMS



### **WOMEN AND MEN BLAZER**

**Women - Style no:** STMN8007 **Price:** \$41

**Men - Style no:** STMN8010 **Price:** \$41

**Fabric Type:** Gabardine

**Fabric Content:** %50 Cotton - %40 Polyester -  
%10 Lycra

**Fabric Weight:** 220-310gr/m2

**Size Range:** 28-74

#### **Washing Instructions:**

Warm Machine Wash

Do not Bleach

Tumble Dry

Warm Iron

Dry cleanable with care

**Certificate:** OEKO-TEX



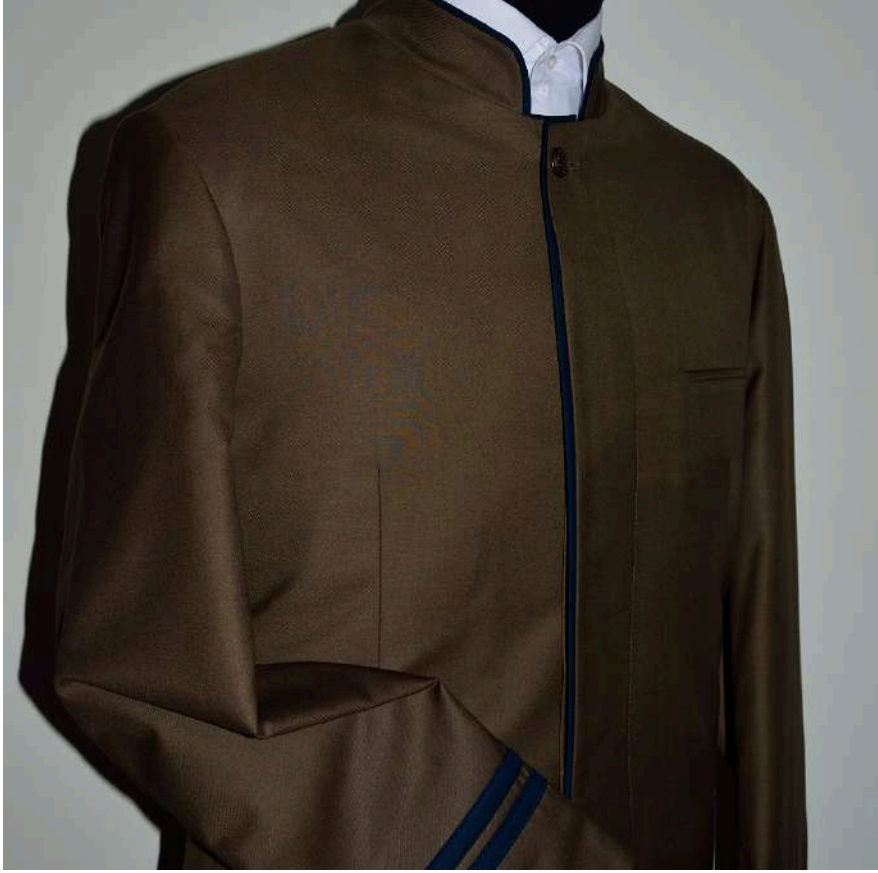
KCS TURIZM TEKSTIL OTOMOTIV AMBALAJ ITHALAT VE IHRACAT LIMITED SIRKETI

Kaan Saatman Uniforms, Garments & Fabrics

Adalet Mah. Anadolu Cad. No: 41 081 Bayrakli/Izmir-Turkey

E-mail: [info@saatmantextile.com](mailto:info@saatmantextile.com) Web: [www.saatmantextile.com](http://www.saatmantextile.com)

## CORPORATE UNIFORMS



### **BLAZER (WING COLLAR)**

**Style no:** STMN8008 **Price:** \$47

**Fabric Type:** Gabardine

**Fabric Content:** %50 Cotton - %40 Polyester -  
%10 Lycra

**Fabric Weight:** 220-310gr/m2

**Size Range:** 28-74

#### **Washing Instructions:**

Warm Machine Wash

Do not Bleach

Tumble Dry

Warm Iron

Dry cleanable with care

**Certificate:** OEKO-TEX

KCS TURIZM TEKSTIL OTOMOTIV AMBALAJ ITHALAT VE IHRACAT LIMITED SIRKETI

Kaan Saatman Uniforms, Garments & Fabrics

Adalet Mah. Anadolu Cad. No: 41 081 Bayrakli/Izmir-Turkey

E-mail: [info@saatmantextile.com](mailto:info@saatmantextile.com) Web: [www.saatmantextile.com](http://www.saatmantextile.com)

## CORPORATE UNIFORMS



### **VEST (WING COLLAR)**

**Style no:** STMN8009 **Price:** \$43

**Fabric Type:** Gabardine

**Fabric Content:** %50 Cotton - %40 Polyester -  
%10 Lycra

**Fabric Weight:** 220-310gr/m2

**Size Range:** 28-74

#### **Washing Instructions:**

Warm Machine Wash

Do not Bleach

Tumble Dry

Warm Iron

Dry cleanable with care

**Certificate:** OEKO-TEX



KCS TURIZM TEKSTIL OTOMOTIV AMBALAJ ITHALAT VE IHRACAT LIMITED SIRKETI

Kaan Saatman Uniforms, Garments & Fabrics

Adalet Mah. Anadolu Cad. No: 41 081 Bayrakli/Izmir-Turkey

E-mail: [info@saatmantextile.com](mailto:info@saatmantextile.com) Web: [www.saatmantextile.com](http://www.saatmantextile.com)

## CONTACT AND COMPANY INFORMATION

**Trade Name:** KCS TURIZM TEKSTIL OTOMOTIV AMBALAJ ITHALAT VE IHRACAT LIMITED SIRKETI

**Main Office:** Adalet Mah. Anadolu Cad. No:41 D:081 Megapol Tower

Bayrakli, Izmir TR-35530 **TURKEY**

**Manufacturing:** 4109 sokak no:2 Yunus Emre Mahallesi

Karabaglar, Izmir TR-34260 **TURKEY**

**Contact Office:** Toronto, **ON CANADA**

**E-mail:** [info@saatmantextile.com](mailto:info@saatmantextile.com)

**Web:** [www.saatmantextile.com](http://www.saatmantextile.com)

**Instagram:** saatmantextiles

**Number of Employees:** 50-60

**Manufacturing Area:** 3000m2

**KCS LTD Co.**, is a member of Izmir Chamber of Commerce and Aegean Exporters Associations and Aegean Apparel Exporters Association

Aegean Exporters Associations Member ID: **32153**

Izmir Chamber Registration No: **1914291**

### OFFICIAL AND ACTIVE MEMBER OF:



İZMİR CHAMBER OF COMMERCE



**Turkey**

Discover  
the potential

KCS TURIZM TEKSTIL OTOMOTIV AMBALAJ ITHALAT VE IHRACAT LIMITED SIRKETI

Kaan Saatman Uniforms, Garments & Fabrics

Adalet Mah. Anadolu Cad. No: 41 081 Bayrakli/Izmir-Turkey

E-mail: [info@saatmantextile.com](mailto:info@saatmantextile.com) Web: [www.saatmantextile.com](http://www.saatmantextile.com)