

kaan saatman

uniforms & garments

INTERNATIONAL UNIFORM & APPAREL MANUFACTURER AND EXPORTER SINCE 1993

We are a one stop shop apparel supply partner that empowers our clients to nimbly adapt to ever changing circumstances.

We lead the industry in product range, lead time and order size versatility, therefore, our partners receive their products they need when they need them without the burden of excess inventory.

Manufactured in Izmir, Turkey. Exported to All Over the World.



İZMİR CHAMBER OF COMMERCE



KCS TURİZM TEKSTİL OTOMOTİV AMBALAJ İTHALAT VE İHRACAT LIMITED SİRKETİ
Kaan Saatman Uniforms, Garments & Fabrics
Adalet Mah. Anadolu Cad. No: 41 081 Bayraklı/Izmir-Turkey
E-mail: info@saatmantextile.com Web: www.saatmantextile.com

Who are we?

Kaan Saatman Uniforms & Garments is a manufacturer and exporter company with a professional team following up sales, orders, manufacturing, shipments, and documentation based in Izmir, TURKEY with a contact office in Toronto, CANADA.

Why us?

We are in the business over 20 years and in collaboration with best fabric manufacturers. We are supplying our fabrics from the best manufacturers in Turkey, this means a fast and quick delivery for our customers.

Located in the west coast of Turkey, therefore it is easy to reach all the countries. Izmir is close to Turkey's main ports and Izmir Adnan Menderes International Airport.

What do we do?

We are always one click or one call away from you with world's best certificated fabrics and with the best workmanship. When we bring them under the same roof and serve to your door.

- CORPORATE UNIFORMS
- HOTEL UNIFORMS
- SPECIAL APRONS
- SCHOOL AND COLLEGE UNIFORMS
- RESTAURANT UNIFORMS
- WORK WEARS (FACTORY UNIFORMS)
- VISIBILITY UNIFORMS
- HEALTHCARE & HOSPITAL UNIFORMS
- SUITS

YES, WE MANUFACTURE and YES, WE ARE DEALING WITH ANY OTHER ITEMS YOU NEED THAT WE DON'T MANUFACTURE.

THAT MAKES US A COMPLETE SUPPLIER FOR YOU.

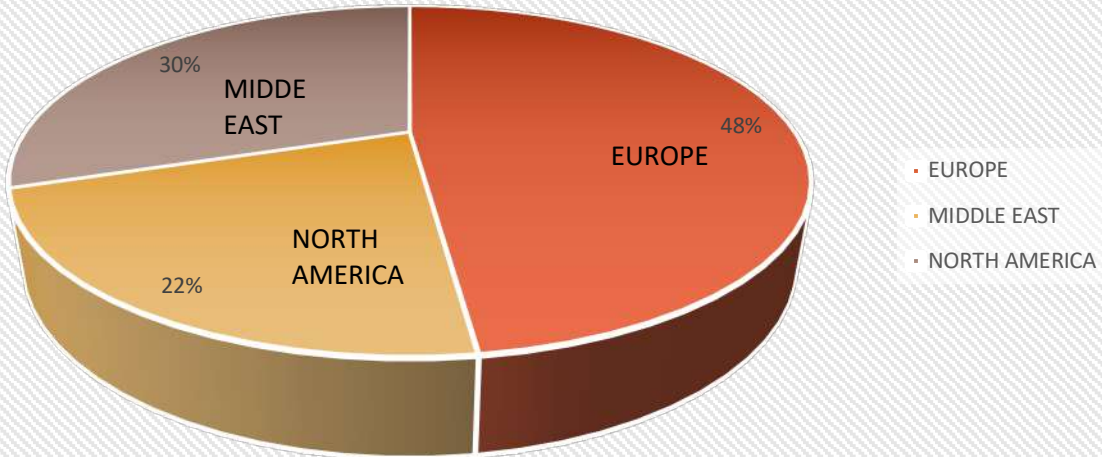
OUR LOCATION

Our company is located literally in the middle of the world.
Izmir, Turkey has many ports and an international airport which reduces shipping costs.

We are close to **Izmir Port, Istanbul Port, Mersin Port** and
Izmir Adnan Menderes International Airport.



Which destination we are exporting our school uniforms?



This is one of the strong sides of SAATMAN TEXTILE.

We are exporting all over the world.

Our experienced customs and exporting team will choose the best carrier for you and follow up your orders until you receive them.

KCS TURIZM TEKSTIL OTOMOTIV AMBALAJ ITHALAT VE IHRACAT LIMITED SIRKETI
Kaan Saatman Uniforms, Garments & Fabrics
Adalet Mah. Anadolu Cad. No: 41 081 Bayrakli/Izmir-Turkey
E-mail: info@saatmantextile.com Web: www.saatmantextile.com

OUR PARTNERS

TOURISM MANAGEMENT SCHOOLS AND COLLEGES



مدرسة الكويت الانجليزية
KUWAIT ENGLISH SCHOOL



Swiss Hotel
Management School



HOTELS

R
RENAISSANCE®
HOTELS

H HILTON
WORLDWIDE

KCS TURİZM TEKSTİL OTOMOTİV AMBALAJ İTHALAT VE İHRACAT LIMITED SİRKETİ
Kaan Saatman Uniforms, Garments & Fabrics
Adalet Mah. Anadolu Cad. No: 41 081 Bayraklı/Izmir-Turkey
E-mail: info@saatmantextile.com Web: www.saatmantextile.com

HOSPITALS AND CLINICS



AUTOMOTIVE INDUSTRY



SWITZERLAND RAILWAY COMPANIES



AUTOMATION AND PACKING INDUSTRY



FIBER OPTIC INDUSTRY



SPORTS CLUB



OUR CERTIFICATIONS

We know the sensitivity of our partners and customers.

We are a quality freak that is why our fabrics holds the best certificates around the world.

You can contact us for technical data sheets of our fabrics.



BRINGING YOUR NUANCED DESIGN VISION TO LIFE



**OUR DESIGNERS WILL CREATE
YOUR LABELS TO REFLECT YOUR
COMPANY LOGO AND MOTTO
ON YOUR UNIFORM AT THEIR
BEST CONDITION**



**WIDE-RANGING AND FLEXIBLE
FABRIC CAPABILITIES**



**ALWAYS FOLLOWING STATE
OF THE ART TECHNOLOGY
AND SHARING WITH OUR
CLIENTS**

ORDER PROCESSING WORKFLOW

FIRST STEP



Simply get in touch with us. Either from whatsapp +905336144938 or you can send an email to info@saatmantextile.com

SECOND STEP



Our team members will ask you questions about your inquiry or you can describe about your needs.

As we do not provide a catalogue, please take a look at our company presentation and you can go through our previous projects and manufactured items.

THIRD STEP



Tell us all about your details, thus, it will be helpful while we are preapring your samples and a detailedd quotation for main order.

FOURTH STEP



Our sampling department will work on your products and its accessories.

It will take some time however this is the hardest and most difficult part before the main production.

Sorry for keep you waiting and being too sensitive on our jobs ☺

FIFTH STEP



Some customs are difficult and sensitive to complete the import necessities. There are always unknown procedures after we export your products and while you are importing.

While our sample department is working on your products, export&import team will work with our customs agents about the destination which the goods will arrive and make your importing easier.

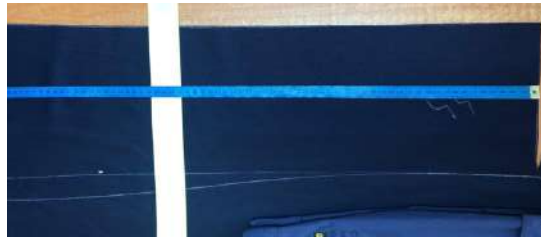
SIXTH STEP



Samples are ready!

We will ship your samples as soon as possible and we will be looking forward to hearing back from you.

PRODUCTION



It is no question left time! Everything is clear and we can start the main production.

Our sales and export department will be in touch constantly, inform about the production and inform you when ready to ship.

CONGRATULATIONS!

YOUR ORDER IS READY TO SHIP IN OUR WAREHOUSE.

YOU WILL RECEIVE SHORTLY.



KCS TURIZM TEKSTIL OTOMOTIV AMBALAJ ITHALAT VE IHRACAT LIMITED SIRKETI

Kaan Saatman Uniforms, Garments & Fabrics

Adalet Mah. Anadolu Cad. No: 41 081 Bayrakli/Izmir-Turkey

E-mail: info@saatmantextile.com Web: www.saatmantextile.com

SCHOOL UNIFORMS

KUWAIT ENGLISH SCHOOL AND IZMIR TURKEY SEVINC KOLEJI PROJECTS

We support that every school has its own design. After understanding what is on their mind, our manufacturing capabilities are limitless. We are very able to manufacture any kind of uniform with the highest quality and with the fair cost.



KCS TURIZM TEKSTIL OTOMOTIV AMBALAJ ITHALAT VE IHRACAT LIMITED SIRKETI
Kaan Saatman Uniforms, Garments & Fabrics
Adalet Mah. Anadolu Cad. No: 41 081 Bayrakli/Izmir-Turkey
E-mail: info@saatmantextile.com Web: www.saatmantextile.com

POLO T-SHIRTS



SCHOOL POLO SHORT SLEEVE T-SHIRT

Style no: STMN4148 **Price:** \$7,5

Fabric Type: Piqué Combed Cotton

Fabric Blend: %80 Cotton %20 Polyester

Fabric Weight: 180-260gr/m2

Size Range: Infant School

Primary School – Secondary School

High School

Washing Instructions:

Warm Machine Wash

Do not Bleach

Tumble Dry

Warm Iron

Dry cleanable with care

Certificate: OEKO-TEX

Customization: School Logo Embroidered on

Left Chest

Sleeves Cuff Finished



SCHOOL POLO LONG SLEEVE T-SHIRT

Style no: STMN4150 **Price:** \$8

Fabric Type: Piqué Combed Cotton

Fabric Blend: %80 Cotton %20 Polyester

Fabric Weight: 180-260gr/m2

Size Range: Infant School

Primary School – Secondary School

High School

Washing Instructions:

Warm Machine Wash

Do not Bleach

Tumble Dry

Warm Iron

Dry cleanable with care

Certificate: OEKO-TEX

Customization: School Logo Embroidered on

Left Chest

Sleeves Cuff Finished



SCHOOL POLO SHORT SLEEVE T-SHIRT

Style no: STMN4151 **Price:** \$7,5

Fabric Type: Pique Cotton

Fabric Blend: %80 Cotton %20 Polyester

Fabric Weight: 180-240gr/m2

Size Range: Infant School

Primary School – Secondary School

High School

Washing Instructions:

Warm Machine Wash

Do not Bleach

Tumble Dry

Warm Iron

Dry cleanable with care

Certificate: OEKO-TEX

Customization: School Logo Embroidered on
Left Chest

Sleeves Cuff Finished

Swatch Card for Pique Combed Cotton T-shirts and Sweatshirts



KCS TURIZM TEKSTIL OTOMOTIV AMBALAJ ITHALAT VE IHRACAT LIMITED SIRKETI
Kaan Saatman Uniforms, Garments & Fabrics
Adalet Mah. Anadolu Cad. No: 41 081 Bayrakli/Izmir-Turkey
E-mail: info@saatmantextile.com Web: www.saatmantextile.com

COMBED COTTON T-SHIRTS



COMBED COTTON SHORT SLEEVE T-SHIRT

Style no: STMN4147 **Price:** \$6,5

Fabric Type: Combed Cotton

Fabric Blend: %80 Cotton %20 Polyester

Fabric Weight: 155-210gr/m2

Size Range: Infant School

Primary School – Secondary School

High School

Washing Instructions:

Warm Machine Wash

Do not Bleach

Tumble Dry

Warm Iron

Dry cleanable with care

Certificate: OEKO-TEX

Customization: School Motto Printed in the Middle

Sleeves Finishes are Coloured

KCS TURIZM TEKSTIL OTOMOTIV AMBALAJ ITHALAT VE IHRACAT LIMITED SIRKETI

Kaan Saatman Uniforms, Garments & Fabrics

Adalet Mah. Anadolu Cad. No: 41 081 Bayrakli/Izmir-Turkey

E-mail: info@saatmantextile.com Web: www.saatmantextile.com

Swatch Cards for Combed Cotton T-Shirt



KCS TURIZM TEKSTIL OTOMOTIV AMBALAJ ITHALAT VE IHRACAT LIMITED SIRKETI
Kaan Saatman Uniforms, Garments & Fabrics
Adalet Mah. Anadolu Cad. No: 41 081 Bayrakli/Izmir-Turkey
E-mail: info@saatmantextile.com Web: www.saatmantextile.com

BOTTOMS



SCHOOL CANVAS TROUSER

Style no: STMN4152 **Price:** \$16

Fabric Type: Canvas Cotton

Fabric Blend: %80 Cotton - %15 Poly - %5 Lycra

Fabric Weight: 210-280gr/m2

Size Range: Infant School

Primary School – Secondary School

High School

Washing Instructions:

Warm Machine Wash

Do not Bleach

Tumble Dry

Warm Iron

Dry cleanable with care

Certificate: OEKO-TEX

Customization: School Logo Embroidered on the Right Leg

-Customized Buttons

-Adjustable Waist Measure



SCHOOL CANVAS SHORTS

Style no: STMN4153 **Price:** \$14,5

Fabric Type: Canvas Cotton

Fabric Blend: %80 Cotton - %15 Poly - %5 Lycra

Fabric Weight: 210-280gr/m2

Size Range: Infant School

Primary School – Secondary School

High School

Washing Instructions:

Warm Machine Wash

Do not Bleach

Tumble Dry

Warm Iron

Dry cleanable with care

Certificate: OEKO-TEX

Customization: School Logo Embroidered on the Right Leg

-Customized Buttons

SHORTS



SCHOOL CANVAS SHORTS

Style no: STMN4153 **Price:** \$14,5

Fabric Type: Canvas Cotton

Fabric Blend: %80 Cotton - %15 Poly - %5 Lycra

Fabric Weight: 210-280gr/m2

Size Range: Infant School

Primary School – Secondary School

High School

Washing Instructions:

Warm Machine Wash

Do not Bleach

Tumble Dry

Warm Iron

Dry cleanable with care

Certificate: OEKO-TEX

Customization: School Logo Embroidered on the
Right Leg

-Customized Buttons

-Turn-ups/cuffs



Any type of CUSTOMIZATION is possible at every type of uniform. We put an adjustment button into the side waist hence in case of our kids are growing every second.

Swatch Cards for Canvas Uniforms



TRACKING SUITS



SCHOOL TRACKING SUITS

Style no: STMN4154 **Price:** \$38

Fabric Type: 3 Yarn Fabric/Triple Knit Fabric

Fabric Content: %100 Cotton

Fabric Weight: 220-310gr/m2

Size Range: Infant School

Primary School – Secondary School

High School

Washing Instructions:

Warm Machine Wash

Do not Bleach

Tumble Dry

Warm Iron

Dry cleanable with care

Certificate: OEKO-TEX

Customization: School Logo Embroidered on the Left Chest

-Customized Zipper and Labeling

-Lines on the Sleeves

-Applique School Name on the Left Leg

-Cuffs Finished on the Arms and Bottom

KCS TURIZM TEKSTIL OTOMOTIV AMBALAJ ITHALAT VE IHRACAT LIMITED SIRKETI

Kaan Saatman Uniforms, Garments & Fabrics

Adalet Mah. Anadolu Cad. No: 41 081 Bayrakli/Izmir-Turkey

E-mail: info@saatmantextile.com Web: www.saatmantextile.com

TRACKING SUITS



SCHOOL TRACKING SUITS

Style no: STMN4155 **Price:** \$38

Fabric Type: 3 Yarn Fabric/Triple Knit Fabric

Fabric Blend: %100 Cotton

Fabric Weight: 220-310gr/m2

Size Range: Infant School

Primary School – Secondary School

High School

Washing Instructions:

Warm Machine Wash

Do not Bleach

Tumble Dry

Warm Iron

Dry cleanable with care

Certificate: OEKO-TEX

Customization: School Logo Embroidered on the Left Chest

-Customized Zipper and Labeling

-Lines on the Sleeves

-Applique School Name on the Left Leg

-Cuffs Finished on the Arms and Bottom

KCS TURIZM TEKSTIL OTOMOTIV AMBALAJ ITHALAT VE IHRACAT LIMITED SIRKETI

Kaan Saatman Uniforms, Garments & Fabrics

Adalet Mah. Anadolu Cad. No: 41 081 Bayrakli/Izmir-Turkey

E-mail: info@saatmantextile.com Web: www.saatmantextile.com



SCHOOL TRACKING SUITS

Style no: STMN4155 **Price:** \$38

Fabric Type: 3 Yarn Fabric/Triple Knit Fabric

Fabric Blend: %100 Cotton

Fabric Weight: 220-310gr/m2

Size Range: Infant School

Primary School – Secondary School

High School

Washing Instructions:

Warm Machine Wash

Do not Bleach

Tumble Dry

Warm Iron

Dry cleanable with care

Certificate: OEKO-TEX

Customization: School Logo Embroidered on the Left Chest

-Customized Zipper and Labeling

-Lines on the Sleeves

-Applique School Name on the Left Leg

-Cuffs Finished on the Arms and Bottom

KCS TURIZM TEKSTIL OTOMOTIV AMBALAJ ITHALAT VE IHRACAT LIMITED SIRKETI

Kaan Saatman Uniforms, Garments & Fabrics

Adalet Mah. Anadolu Cad. No: 41 081 Bayrakli/Izmir-Turkey

E-mail: info@saatmantextile.com Web: www.saatmantextile.com

SHORTS



SCHOOL TRACKING SHORTS

Style no: STMN4156 **Price:** \$11

Fabric Type: 3 Yarn Fabric/Triple Knit Fabric

Fabric Content: %100 Cotton

Fabric Weight: 220-310gr/m2

Size Range: Infant School

Primary School – Secondary School

High School

Washing Instructions:

Warm Machine Wash

Do not Bleach

Tumble Dry

Warm Iron

Dry cleanable with care

Certificate: OEKO-TEX

Customization: School Logo Embroidered on the
Left Leg



KCS TURIZM TEKSTIL OTOMOTIV AMBALAJ ITHALAT VE IHRACAT LIMITED SIRKETI

Kaan Saatman Uniforms, Garments & Fabrics

Adalet Mah. Anadolu Cad. No: 41 081 Bayrakli/Izmir-Turkey

E-mail: info@saatmantextile.com Web: www.saatmantextile.com

P.E. T-SHIRT AND SHORTS



P.E. T-SHIRTS AND SHORTS

Shirt - Style no: STMN4157 **Price:** \$12

Short - Style no: STMN4173 **Price:** \$8

Fabric Type: DRY-TOUCH

Fabric Blend: %100 (Polyester) POY

Fabric Weight: 150-280gr/m2

Size Range: Infant School

Primary School – Secondary School

High School

Washing Instructions:

Warm Machine Wash

Do not Bleach

Tumble Dry

Warm Iron

Dry cleanable with care

Certificate: OEKO-TEX

Customization: School Logo Embroidered on the
Left Leg and on the Back

-Lines on the Sides Matching to School Logo



KCS TURIZM TEKSTIL OTOMOTIV AMBALAJ ITHALAT VE IHRACAT LIMITED SIRKETI

Kaan Saatman Uniforms, Garments & Fabrics

Adalet Mah. Anadolu Cad. No: 41 081 Bayrakli/Izmir-Turkey

E-mail: info@saatmantextile.com Web: www.saatmantextile.com

P.E. T-SHIRT AND SHORTS



P.E. T-SHIRT

Style no: STMN4158 **Price:** \$12

Fabric Type: DRY-TOUCH

Fabric Blend: %100 (Polyester) POY

Fabric Weight: 150-280gr/m2

Size Range: Infant School

Primary School – Secondary School

High School

Washing Instructions:

Warm Machine Wash

Do not Bleach

Tumble Dry

Warm Iron

Dry cleanable with care

Certificate: OEKO-TEX

Customization: School Logo Embroidered on the

Left Leg and on the Back

-Lines on the Sides Matching to School Logo

KCS TURIZM TEKSTIL OTOMOTIV AMBALAJ ITHALAT VE IHRACAT LIMITED SIRKETI

Kaan Saatman Uniforms, Garments & Fabrics

Adalet Mah. Anadolu Cad. No: 41 081 Bayrakli/Izmir-Turkey

E-mail: info@saatmantextile.com Web: www.saatmantextile.com

PULLOVER



SCHOOL PULLOVER

Style no: STMN4159 **Price:** \$21

Fabric Type: Cardigan Fabric

Fabric Content: %100 Cotton

Fabric Weight: 230-295gr/m2

Size Range: Infant School

Primary School – Secondary School

High School

Washing Instructions:

Warm Machine Wash

Do not Bleach

Tumble Dry

Warm Iron

Dry cleanable with care

Certificate: OEKO-TEX

Customization: School Logo Embroidered on the Left Chest

-Metal Pins on the Side Pockets

KCS TURIZM TEKSTIL OTOMOTIV AMBALAJ ITHALAT VE IHRACAT LIMITED SIRKETI

Kaan Saatman Uniforms, Garments & Fabrics

Adalet Mah. Anadolu Cad. No: 41 081 Bayrakli/Izmir-Turkey

E-mail: info@saatmantextile.com Web: www.saatmantextile.com

Swatch Cards for Hoodies, Tracking Suits and Sweaters.



SKIRTS



PLEATED SKIRT

Style no: STMN4160 **Price:** \$16

Fabric Type: Gabardine

Fabric Content: %100 Cotton

Fabric Weight: 210-305gr/m2

Size Range: Infant School

Primary School – Secondary School

High School

Washing Instructions:

Warm Machine Wash

Do not Bleach

Tumble Dry

Warm Iron

Dry cleanable with care

Certificate: OEKO-TEX



KCS TURIZM TEKSTIL OTOMOTIV AMBALAJ ITHALAT VE IHRACAT LIMITED SIRKETI

Kaan Saatman Uniforms, Garments & Fabrics

Adalet Mah. Anadolu Cad. No: 41 081 Bayrakli/Izmir-Turkey

E-mail: info@saatmantextile.com Web: www.saatmantextile.com

SKIRTS



PENCIL SKIRT

Style no: STMN4161 **Price:** \$14

Fabric Type: Gabardine

Fabric Blend: %100 Cotton

Fabric Weight: 210-305gr/m2

Size Range: Infant School

Primary School – Secondary School

High School

Washing Instructions:

Warm Machine Wash

Do not Bleach

Tumble Dry

Warm Iron

Dry cleanable with care

Certificate: OEKO-TEX



KCS TURIZM TEKSTIL OTOMOTIV AMBALAJ ITHALAT VE IHRACAT LIMITED SIRKETI

Kaan Saatman Uniforms, Garments & Fabrics

Adalet Mah. Anadolu Cad. No: 41 081 Bayrakli/Izmir-Turkey

E-mail: info@saatmantextile.com Web: www.saatmantextile.com

DETAILS



VEST

Style no: STMN8001 **Price:** \$26

Fabric Type: ALTINYILDIZ ZETA Gabardine

Fabric Content: %44 Wool - %54 Poly - %2 Lycra

Fabric Weight: 220gr/m2

Size Range: 30-72 for Women and Men

Washing Instructions:

Warm Machine Wash

Do not Bleach

Tumble Dry

Warm Iron

Dry cleanable with care

Certificate: OEKO-TEX

Customization: Company Logo Embroidered on the Right Chest

-Name Tag on Left Chest

-Coloured Adjustment on the Back

-Company Logo Embroidery on the Sleeves

-Printed Lining on the Back

BLAZER SLEEVES EMBROIDERED WITH LOGOS



KCS TURIZM TEKSTIL OTOMOTIV AMBALAJ ITHALAT VE IHRACAT LIMITED SIRKETI

Kaan Saatman Uniforms, Garments & Fabrics

Adalet Mah. Anadolu Cad. No: 41 081 Bayrakli/Izmir-Turkey

E-mail: info@saatmantextile.com Web: www.saatmantextile.com



Style no: STMN8001 Price: \$26

CUSTOMIZATION: We are always looking for ways to reflect your company's logo and colors on the uniforms. As you can see on pictures, Yellow and Red are reflected on the uniforms as on the Logos.



KCS TURIZM TEKSTIL OTOMOTIV AMBALAJ ITHALAT VE IHRACAT LIMITED SIRKETI
Kaan Saatman Uniforms, Garments & Fabrics
Adalet Mah. Anadolu Cad. No: 41 081 Bayrakli/Izmir-Turkey
E-mail: info@saatmantextile.com Web: www.saatmantextile.com

DETAILS



KCS TURIZM TEKSTIL OTOMOTIV AMBALAJ ITHALAT VE IHRACAT LIMITED SIRKETI
Kaan Saatman Uniforms, Garments & Fabrics
Adalet Mah. Anadolu Cad. No: 41 081 Bayrakli/Izmir-Turkey
E-mail: info@saatmantextile.com Web: www.saatmantextile.com



BLAZER

Style no: STMN8002 **Price:** \$44

Fabric Type: ALTINYILDIZ ZETA Gabardine

Fabric Content: %44 Wool - %54 Poly - %2 Lycra

Fabric Weight: 220-300gr/m2

Size Range: 30-72 for Women and Men

Washing Instructions:

Warm Machine Wash

Do not Bleach

Tumble Dry

Warm Iron

Dry cleanable with care

Certificate: OEKO-TEX

Customization: Symbol Embroidered on the Left

Collar

-Name Tag on Left Chest

-Company Logo Embroidery on the Sleeves

-Printed Inner Lining



KCS TURIZM TEKSTIL OTOMOTIV AMBALAJ ITHALAT VE IHRACAT LIMITED SIRKETI

Kaan Saatman Uniforms, Garments & Fabrics

Adalet Mah. Anadolu Cad. No: 41 081 Bayrakli/Izmir-Turkey

E-mail: info@saatmantextile.com Web: www.saatmantextile.com

INSIDE POCKET CUSTOMIZED REGARDING CLIENT REQUEST



KCS TURIZM TEKSTIL OTOMOTIV AMBALAJ ITHALAT VE IHRACAT LIMITED SIRKETI
Kaan Saatman Uniforms, Garments & Fabrics
Adalet Mah. Anadolu Cad. No: 41 081 Bayrakli/Izmir-Turkey
E-mail: info@saatmantextile.com Web: www.saatmantextile.com

Swatch Cards for;

Trousers,

Skirts,

Blazers and

Vests



KCS TURIZM TEKSTIL OTOMOTIV AMBALAJ ITHALAT VE IHRACAT LIMITED SIRKETI

Kaan Saatman Uniforms, Garments & Fabrics

Adalet Mah. Anadolu Cad. No: 41 081 Bayrakli/Izmir-Turkey

E-mail: info@saatmantextile.com Web: www.saatmantextile.com

BUTTON DOWN SHIRTS



BUTTON DOWN WOMEN SHIRT

Style no: STMN8003 **Price:** \$16

Fabric Type: Polyviscon

Fabric Content: %60 Cotton - %40 Polyester

Fabric Weight: 180-230gr/m2

Size Range: 30-72 for Women and Men

XXS-8XL

Washing Instructions:

Warm Machine Wash

Do not Bleach

Tumble Dry

Warm Iron

Dry cleanable with care

Certificate: OEKO-TEX



KCS TURIZM TEKSTIL OTOMOTIV AMBALAJ ITHALAT VE IHRACAT LIMITED SIRKETI

Kaan Saatman Uniforms, Garments & Fabrics

Adalet Mah. Anadolu Cad. No: 41 081 Bayrakli/Izmir-Turkey

E-mail: info@saatmantextile.com Web: www.saatmantextile.com

BUTTON DOWN SHIRTS



BUTTON DOWN MENS SHIRT

Style no: STMN8004 **Price:** \$16

Fabric Type: Polyviscon

Fabric Content: %60 Cotton - %40 Polyester

Fabric Weight: 180-230gr/m2

Size Range: 30-72 for Women and Men

XXS-8XL

Washing Instructions:

Warm Machine Wash

Do not Bleach

Tumble Dry

Warm Iron

Dry cleanable with care

Certificate: OEKO-TEX



KCS TURIZM TEKSTIL OTOMOTIV AMBALAJ ITHALAT VE IHRACAT LIMITED SIRKETI

Kaan Saatman Uniforms, Garments & Fabrics

Adalet Mah. Anadolu Cad. No: 41 081 Bayrakli/Izmir-Turkey

E-mail: info@saatmantextile.com Web: www.saatmantextile.com

DRESS



Women's Dress

Style no: STMN8005 **Price:** \$37

Fabric Type: Gabardine

Fabric Content: %50 Cotton - %40 Polyester -
%10 Lycra

Fabric Weight: 220gr/m2

Size Range: 30-72

Washing Instructions:

Warm Machine Wash

Do not Bleach

Tumble Dry

Warm Iron

Dry cleanable with care

Certificate: OEKO-TEX



KCS TURIZM TEKSTIL OTOMOTIV AMBALAJ ITHALAT VE IHRACAT LIMITED SIRKETI

Kaan Saatman Uniforms, Garments & Fabrics

Adalet Mah. Anadolu Cad. No: 41 081 Bayrakli/Izmir-Turkey

E-mail: info@saatmantextile.com Web: www.saatmantextile.com

TROUSERS



Men's Trouser

Style no: STMN8006 **Price:** \$28

Fabric Type: Gabardine

Fabric Content: %50 Cotton - %40 Polyester -
%10 Lycra

Fabric Weight: 220gr/m2

Size Range: 32-70

Washing Instructions:

Warm Machine Wash

Do not Bleach

Tumble Dry

Warm Iron

Dry cleanable with care

Certificate: OEKO-TEX



KCS TURIZM TEKSTIL OTOMOTIV AMBALAJ ITHALAT VE IHRACAT LIMITED SIRKETI

Kaan Saatman Uniforms, Garments & Fabrics

Adalet Mah. Anadolu Cad. No: 41 081 Bayrakli/Izmir-Turkey

E-mail: info@saatmantextile.com Web: www.saatmantextile.com

BLAZERS



Men's and Women's Blazer

Women - Style no: STMN8007 **Price:** \$41

Men - Style no: STMN8010 **Price:** \$41

Fabric Type: Gabardine

Fabric Content: %50 Cotton - %40 Polyester -
%10 Lycra

Fabric Weight: 220-310gr/m2

Size Range: 28-74

Washing Instructions:

Warm Machine Wash

Do not Bleach

Tumble Dry

Warm Iron

Dry cleanable with care

Certificate: OEKO-TEX

KCS TURIZM TEKSTIL OTOMOTIV AMBALAJ ITHALAT VE IHRACAT LIMITED SIRKETI

Kaan Saatman Uniforms, Garments & Fabrics

Adalet Mah. Anadolu Cad. No: 41 081 Bayrakli/Izmir-Turkey

E-mail: info@saatmantextile.com Web: www.saatmantextile.com

CONTACT AND COMPANY INFORMATION

Trade Name: KCS TURIZM TEKSTIL OTOMOTIV AMBALAJ ITHALAT VE IHRACAT LIMITED SIRKETI

Main Office: Adalet Mah. Anadolu Cad. No:41 D:081 Megapol Tower
Bayrakli, Izmir TR-35530 **TURKEY**

Manufacturing: 4109 sokak no:2 Yunus Emre Mahallesi
Karabaglar, Izmir TR-34260 **TURKEY**

Contact Office: Toronto, **ON CANADA**

E-mail: info@saatmantextile.com

Web: www.saatmantextile.com

Instagram: saatmantextiles

Number of Employees: 50-60

Manufacturing Area: 3000m2

KCS LTD Co., is a member of **Izmir Chamber of Commerce** and **Aegean Exporters Associations and Aegean Apparel Exporters Association**

Aegean Exporters Associations Member ID: **32153**

Izmir Chamber Registration No: **1914291**

OFFICIAL AND ACTIVE MEMBER OF:



IZMIR CHAMBER OF COMMERCE



Turkey

Discover
the potential

KCS TURIZM TEKSTIL OTOMOTIV AMBALAJ ITHALAT VE IHRACAT LIMITED SIRKETI

Kaan Saatman Uniforms, Garments & Fabrics

Adalet Mah. Anadolu Cad. No: 41 081 Bayrakli/Izmir-Turkey

E-mail: info@saatmantextile.com Web: www.saatmantextile.com